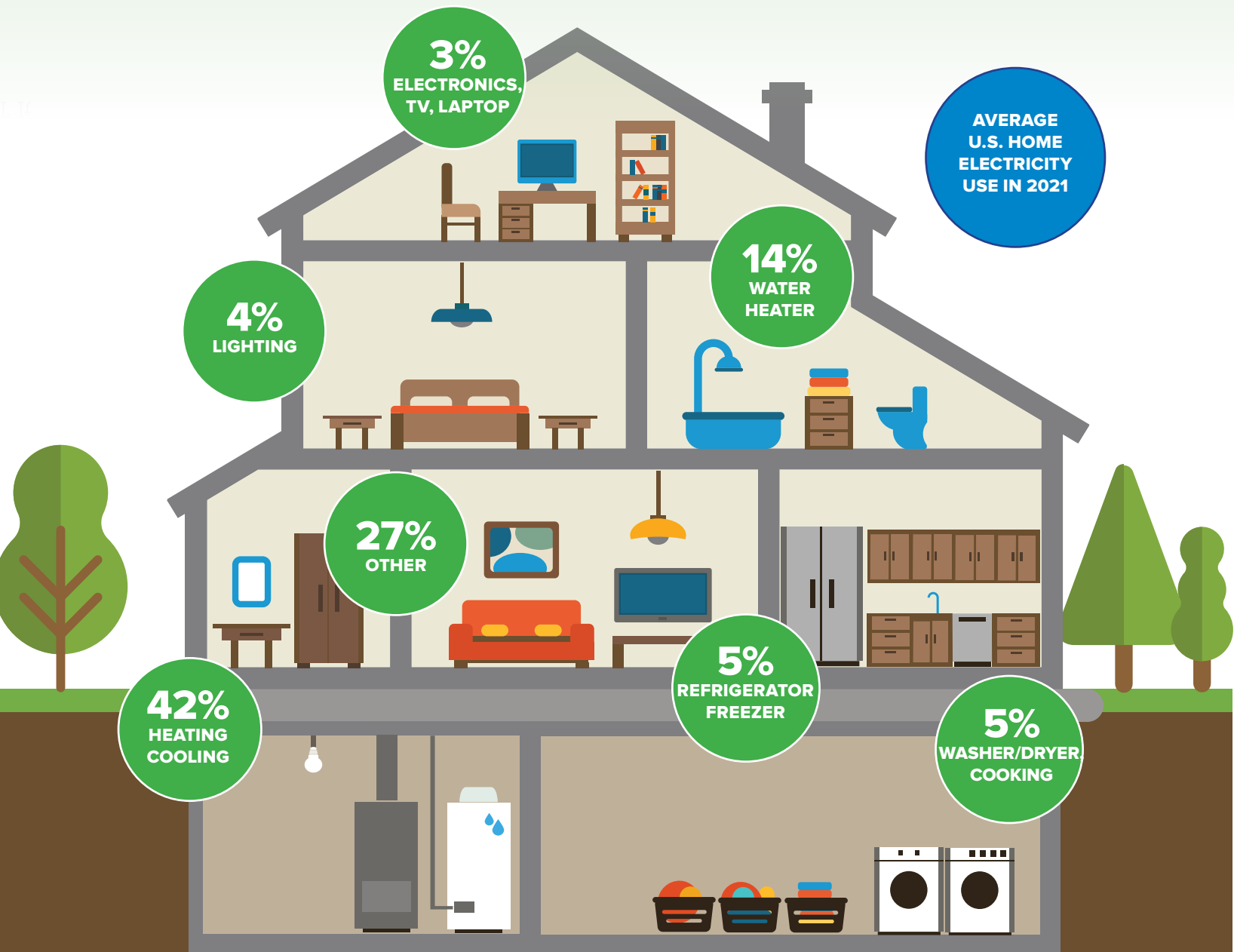


# BE POWER WISE

**Conservation is another way to support a carbon-free electricity future. When we use less power, fewer power plants are needed to meet our electricity needs.**

Electricity conservation is a priority in the Northwest to meet growing demand. We now save enough electricity each year to meet the power needs of seven cities the size of Seattle. Thanks to these savings, the Northwest avoids 25 million tons of carbon dioxide (CO<sub>2</sub>) emissions going into the atmosphere each year.

## Where do we use energy in our homes?



**BE POWER WISE  
CHECKLIST**

HEY, POWER SQUAD! Meet with your family members and check off the energy conservation tips that you are doing now and others that you plan on doing soon to save energy. A little bit adds up!

**Check the things you are doing, or will do, to conserve electricity**

<b>I Do It Now: SCORE 2</b>	<b>I Will Do It Soon: SCORE 1</b>
---------------------------------	---------------------------------------

**Turn off electronics and other devices**

When leaving a room, <i>turn off</i> the TV, computer, lights, video games and other electronics		
--	--	--

Unplug chargers when finished charging		
--	--	--

**Heating less water equals using the water heater less**

Wait to run the dishwasher until it's <i>full</i>		
---	--	--

Take shorter showers		
----------------------	--	--

Talk to my family about using <i>low-flow</i> showerheads		
---	--	--

**Help keep the heat in when it's cold outside, and the cool air in when it's hot outside**

Keep doors closed to keep warm air in during cold weather, and cool air in during hot weather		
---	--	--

<i>Close curtains or blinds</i> to keep sun out during hot weather and retain warmth indoors during cold weather		
--	--	--

**When it's time for new lights, appliances, air conditioning or heating systems**

Talk to your family about using <i>LED</i> energy-efficient light bulbs		
---	--	--

Check energy ratings with your family and talk about what it means for conserving electricity.		
--	--	--

**Tally your scores for each column**

<b>ADD UP YOUR SCORES FOR YOUR POWER SAVER TOTAL!</b>	<b>+</b>	<b>TOTAL</b>
---	----------	--------------

**Using less power adds up to protecting the environment.**

Conservation (like turning the lights off when not using them) and efficiency (like converting from incandescent light bulbs to LED lights) makes it happen.

Thanks to these actions, the Northwest avoids more carbon dioxide (CO<sub>2</sub>) emissions than what 4 million cars would produce each year.

**Are you in the Power Saver Squad?  
Draw us your super suit!**



**YOUR POWER SAVER SCORE:**

- Power Hero: 16 - 18
- Power Star: 11 - 15
- Power Lifter: 6 - 10
- Power Starter: 0 - 5